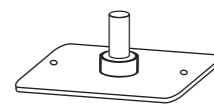
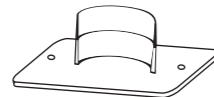


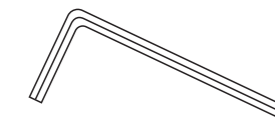
Accessories: O.CORNER CUTTER+ PaperGuide & Blades



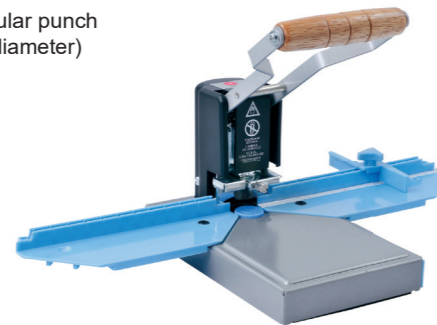
D6
circular punch
(6 mm diameter)



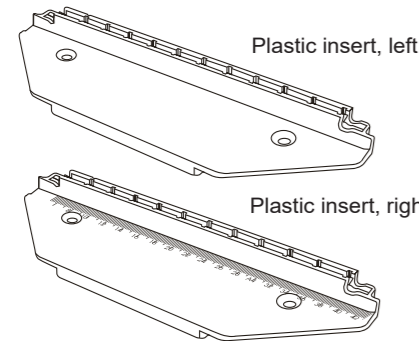
D21
semicircular punch
(21 mm diameter)



• Hex key



• O.CORNER CUTTER +
with PAPER GUIDE installed



Plastic insert, left

Plastic insert, right (with scale)



Adjusting knob



Edge guide



Two fastening screws



Nut



Washer

Maximum number of sheets

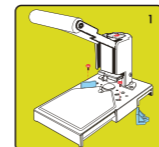
1. D6 punch: 20 sheets* (photos, business cards, standard paper)
2. Other punches: 100 sheets* (ordinary paper)

* tested on 80 g/m² paper

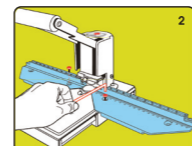
NOTE

1. Do not press the lever when the punch touches the plastic pad (otherwise the punch may become blunt or damaged).
2. The plastic pad must always be exactly in place.

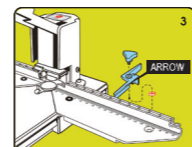
INSTALLING O.CORNER CUTTER+ PAPER GUIDE ACCESSORIES



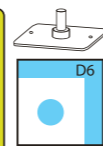
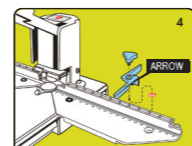
1. Unscrew the two screws that fasten the side guides.



2. Position the two plastic inserts and fasten them to the base with the two screws using the hex key.



3a To make a semicircular cutout at the top edge of a calendar: Place the right edge guide on the right plastic insert with the arrow pointing towards you. Tighten the screw remembering to retain the nut in the groove on the opposite side. Replace the punch with the D21 type (semicircular punch) - see "PUNCH REPLACEMENT".



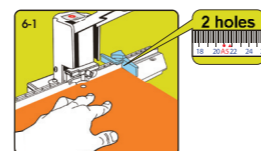
3b To perforate: Place the right edge guide on the right plastic insert with the arrow pointing towards you. Tighten the screw remembering to retain the nut in the groove on the opposite side. Replace the punch with the D6 type (circular punch) - see "PUNCH REPLACEMENT".

To make a single perforation using the right edge guide



Place the A4 size paper to be perforated with its long side pushed against the plastic insert edges. Position the right edge guide on the A4 mark on the scale. The perforation will be exactly midway on the long side of the A4 size sheet.

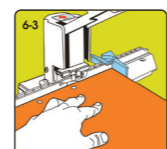
To make two perforations using the right edge guide



Place the A4 size paper to be perforated with its long side pushed against the plastic insert edges. Position the right edge guide on the ▲ mark on the scale. Punch the hole.



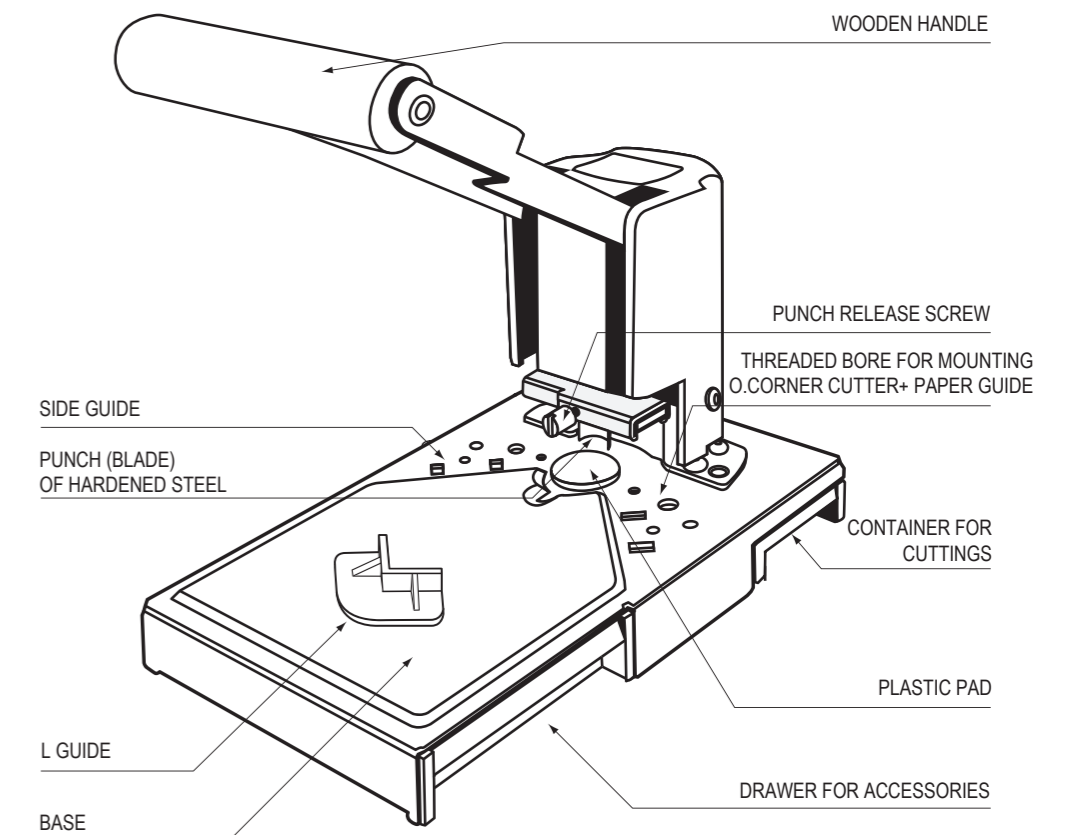
Flip the paper sheets upside down and push them against the right edge guide. Punch the second hole.



The perforations will be exactly midway on the long side of the A4 size sheet and spaced 80 mm apart.

OPERATING INSTRUCTIONS

DESCRIPTION

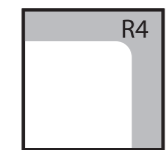
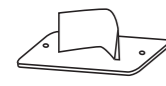


- net weight: 2.12 kg
- gross weight: 2.30 kg
- dimensions (HxWxD): 215x140x230mm

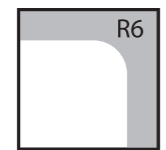
NOTE:

1. Always use the plastic pads to extend the life of punches.
2. Keep your fingers away from the punches when working! Risk of injury!
3. Keep the device and punches away from children.
4. Do not use the punches to cut metal parts, such as clips, staples, etc.
5. Before replacing the plastic pad remove the installed punch.
6. Be particularly careful when changing the punch.
7. Protect the punches from falling from a height. Risk of damage.

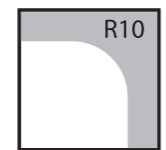
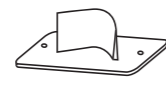
PUNCH FUNCTIONS



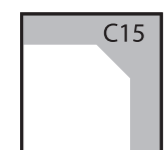
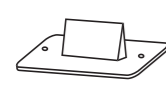
R4
round corner punch
(4 mm radius)



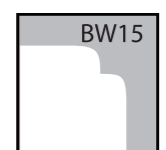
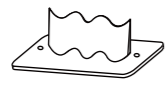
R6
round corner punch
(6 mm radius)



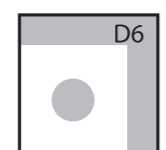
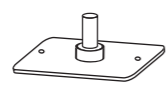
R10
round corner punch
(10 mm radius)



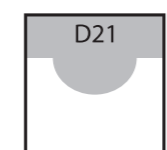
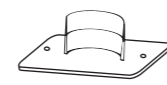
C15
straight cut blade
(length 15 mm)



BW15
wavy edge blade
(length 15 mm)



D6
circular punch
(6 mm diameter)

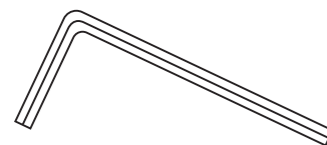


D21
semicircular punch
(21 mm diameter)

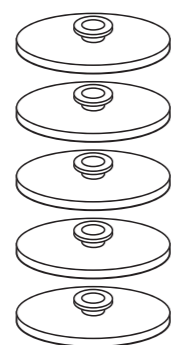
STANDARD EQUIPMENT FOR CUTTING ROUND CORNERS



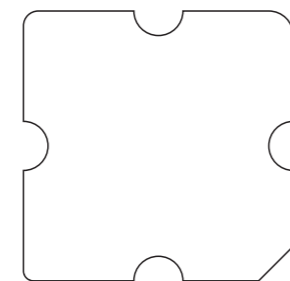
· R6 round corner punch



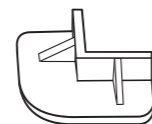
· Hex key



· Five plastic pads

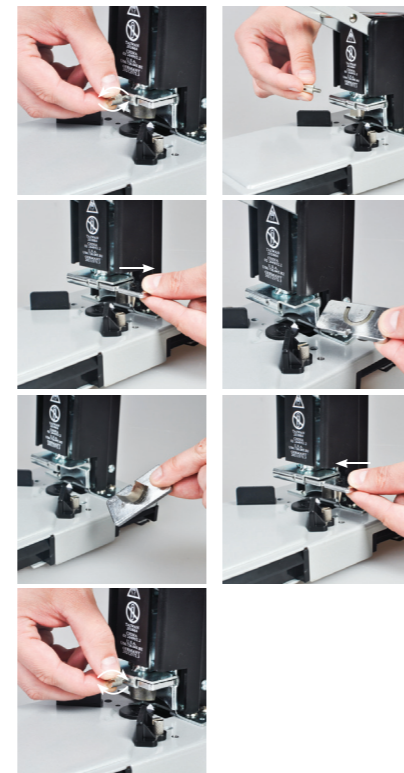


· Plate for side guide calibration



· L guide

PUNCH REPLACEMENT



1. Unscrew and remove the lock screw.

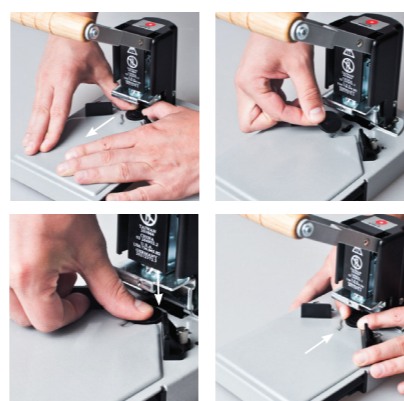
2. Remove the installed punch by pulling it to the right.

3. Insert the selected punch (blade) into the gap. The notch must be on the lock screw side.

4. Screw down the lock screw.

PLASTIC PAD REPLACEMENT

IMPORTANT! Before replacing the pad carry out steps 1 and 2 in section PUNCH REPLACEMENT.



1. Move the plastic pad in the direction shown in the picture and take it out.

2. Place a new pad in the opening and move it in the direction shown in the picture.

HINT

To make the most of a single pad, when one of its faces is worn out, turn it upside down and use again.

PREPARATION TO USE



1. Before using the device for the first time push the wooden handle down slightly and remove the plastic stopper. The lever will now be able to move all the way up.

NOTE!

The device has the R6 punch installed. If another punch is to be used, refer to the PUNCH REPLACEMENT section. If D6 or D21 punch is to be used, refer to the INSTALLING O.CORNER CUTTER+ PAPER GUIDE section.

2. Loosen the two screws as shown in the picture.

3. Place the calibration plate with the proper corner oriented towards the punch. When using R4 punch, the proper corner is S (R-CUT); when using R6 punch, the proper corner is M (R-CUT); when using R10 punch, the proper corner is L (R-CUT); when using C15 or BW15 blades, the proper corner is M (C-CUT).

4. After proper positioning of the calibration plate, push the plastic guides against the plate and screw them down as shown in the picture

5. Insert the paper sheets orienting the corner to be rounded towards the punch. Press the lever until the punch touches the plastic pad. Lift the lever and pull the paper sheets out.

6. For smaller size paper sheets the use of the L guide is recommended. It helps placing the paper sheets evenly and protects against placing fingers under the punch.